

# LIGHTsignal LED BEACON LIGHT

Warning and safety lights



### 360° LED rotating beacon light

Improved visibility and therefore increased safety for you and others



### 12V & 24V compatible

Different application possibilities and high flexibility since compatible with both 12V and 24V vehicles



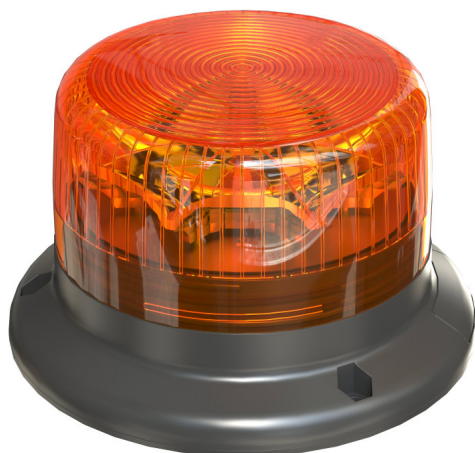
### Protection class: IP65 & IK08

The OSRAM LIGHTsignal LED has been tested in our DIN EN ISO/IEC 17025 certified environmental simulation laboratory for extreme external influences in terms of water, dust, heat, cold and impacts and validated with the protection classes IP65 & IK 08



### ECE Certified - ECE R65 & ECE R10

The required tests and approvals have been carried out and an ECE type approval has been granted1)



### Light is safety- See and be seen with OSRAM

The OSRAM LIGHTsignal LED BEACON LIGHT is a 360° rotating, amber LED rotating beacon that can be mounted on vehicles with unusual width, length or load, as well as on municipal vehicles, emergency vehicles, command vehicles and accident assistance vehicles to draw attention to an unusual situation in road traffic or in the working environment. The rotating beacon from OSRAM can be used for better visual recognition, marking and securing of danger spots or special locations. Furthermore, rotating beacons are used in certain facilities, on machines and devices as well as in alarm systems. The LED rotating beacon from OSRAM is characterized by a high efficiency due to eight long-life high-power LEDs with up to 1900 Kelvin and 1200 Lumen, thus ensuring improved visibility and thus increased safety for you and others - during the day and at night. Thanks to the non-slip, shock-absorbing rubber base, the LED warning light from OSRAM has a particularly high vibration insensitivity. At the same time, the fully rubberized base contributes as a seal between the product and the underground. In addition, the robust, shatterproof housing made of polycarbonate withstands even heavier loads. To reduce and prevent dirt from accumulating on the beacon, the OSRAM LIGHTsignal LED uses a smooth surface on the housing, thus preventing the signal effect from being impaired by dirt. The OSRAM LIGHTsignal LED BEACON LIGHT convinces with a high luminosity and at the same time with a low power consumption. Thanks to the low power consumption of the LEDs, the rotating warning light from OSRAM is also suitable for use over a longer period. Due to the compact and modern design, the beacon offers different application possibilities and a high flexibility since this is compatible with both 12V and 24V vehicles. The mounting material included in the delivery allows a direct and accurate mounting and thus an immediate use of the beacons. The three-point mounting system allows the beacon to be securely and firmly mounted on the vehicle roof. In addition, the LIGHTsignal LED warning light from OSRAM complies with the ECE R10 and R65 guidelines and is therefore approved for use in road traffic<sup>1)</sup> The OSRAM LIGHTsignal LED has been tested in our DIN EN ISO/IEC 17025 certified environmental simulation laboratory for extreme external influences in terms of water, dust, heat, cold and impacts from falls and validated with protection classes IP65 & IK08. The integrated thermal management system regulates the temperature of the LED light and can prevent damage from overheating. The polarity protection inhibits incorrect polarity reversal in the power supply and can thus avert possible damage, due to the automatic shutdown of the LEDs. OSRAM provides a 2-year guarantee<sup>2)</sup> on this product. Special regulations apply regarding the use and application of rotating beacons. This is regulated in the respective, country-specific road traffic licensing regulations.

# Technický list výrobku

## Technické údaje

### Informace o produktu

Odkaz na objednávku	RBL102
Aplikace (specifikace kategorie a produktu)	Warning and safety lights

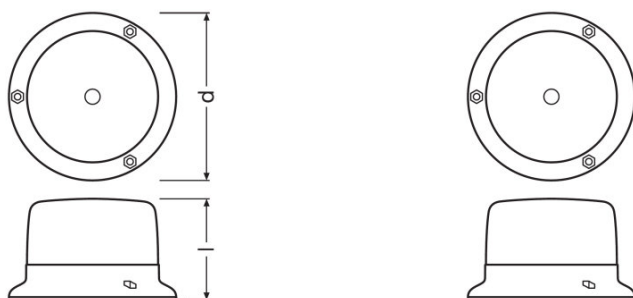
### Parametry

Jmenovitý výkon	7,00 W
Jmenovité napětí	12/24 V

### Fotometrické údaje

Teplota chromatičnosti	1900 K
Barva světla LED	jantarová

### Rozměry & váha



Váha výrobku	305,00 g
Délka	148,0 mm
Výška	89,0 mm

### Životnost

Záruka	2 years
--------	---------

### Vlastnosti

Technologie	LED
-------------	-----

### Certifikáty & standardy

Druh ochrany	IP65 IK08
--------------	-----------

### Kategorizace specifická pro danou zemi

## Technický list výrobku

Odkaz na objednávku






RBL102

### Logistické údaje

Kód výrobku	Popis výrobku	Jednotka balení (kusy/jednotku)	Rozměry (délka x šířka x výška)	Objem	Hrubá hmotnost
4062172232258	LIGHTsignal LED BEACON LIGHT	Folding carton box 1	154 mm x 154 mm x 130 mm	3.08 dm <sup>3</sup>	372.00 g
4062172232265	LIGHTsignal LED BEACON LIGHT	Shipping carton box 12	470 mm x 315 mm x 315 mm	46.64 dm <sup>3</sup>	4804.00 g

Zmíněný produktový kód udává nejmenší jednotku množství, kterou lze objednat. Jednotka balení může obsahovat jeden nebo více samostatných produktů. Při objednávání zadávejte jednotky balení nebo násobky jednotek balení.

### Stažení dat

Soubor	
	User instruction LIGHTsignal LED
	Brochures OSRAM LIGHTsignal HAL BEACON LIGHT flyer (EN)
	Brochures OSRAM LIGHTsignal LED BEACON LIGHT flyer (EN)
	Movie application LIGHTsignal LED (EN)
	Video OSRAM LIGHTsignal LED Beacon Light (EN)

#### Právní rady

1) The OSRAM LIGHTsignal LED BEACON LIGHT is approved according to ECE regulations and may therefore be installed and operated on public roads. In addition to the ECE approval of the product, individual special regulations and laws of the countries must be observed. Please note: Special regulations apply regarding the use and application of rotating beacons. This is regulated in the respective, country-specific road traffic licensing regulations. 2) For precise conditions please refer to: [www.osram.com/am-guarantee](http://www.osram.com/am-guarantee)

Application advice: For more detailed application information and graphics please see product datasheet and user manual.

#### Pokyny k použití

Podrobnější informace k použití a grafiku najdete v technickém listu.

#### Vyloučení odpovědnosti

Změny bez předchozího upozornění vyhrazeny. Chyby a opomenutí vyhrazeny. Vždy se ujistěte, že používáte nejnovější vydání.

