

SINGLE ROW SIDE EMITTING LED LIGHT BAR (KS4684)



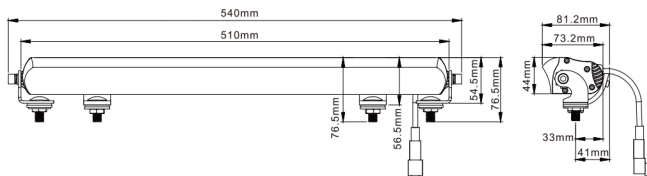
MEASUREMENTS

FRONT VIEW

SIDE VIEW



SIZE(mm)

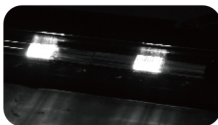
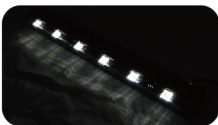
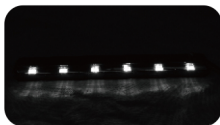


PARAMETERS

Features	Input Voltage	Input Current	Input Power	Lumen	Warranty	Led Quantity
Driving beam	13.5V	3.97A	53.58W	3862Lm	12months	12pcs*7W
Position light	13.5V	0.18A	2.43W	140.6Lm	12months	6pcs*0.5W

LIGHT BEAM PATTERN

Position light



Driving beam



CONNECTOR



█ Black-
█ Red +
 Position light



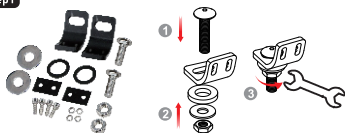
connect to battery or
connect to wiring harness



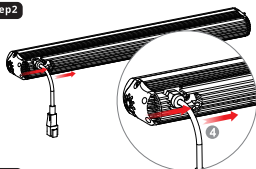
Remember to use relay when install to LED auxiliary lights. This product is to be used in vehicles only. Don't try to connect it to AC power supply! Make sure the voltage in vehicle matches products! If you have doubts regarding installation please contact professional electrician.

ACCESSORIES1-BOTTOM BRACKET

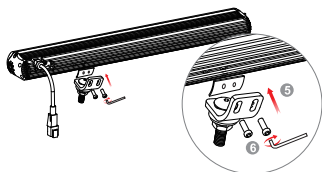
Step1



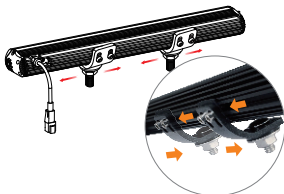
Step2



Step3



Step4

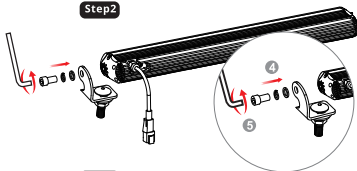


ACCESSORIES2-SIDE BRACKET

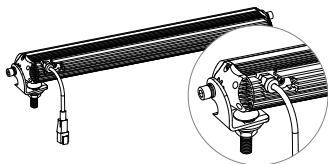
Step1



Step2



Step3



Step4



Adjustable stand angle



PLEASE DON'T PULL THE CABLE DIRECTLY

